

City of Easley & City of Pickens

Pickens Doodle-Line Rail-to-Trail Feasibility Study



design team

- Leading national trail design firm
- Feasibility studies, master plans, cost benefit analysis, and construction documents
- **43+ rails-to-trails projects across the nation**

LOCAL PROJECTS:

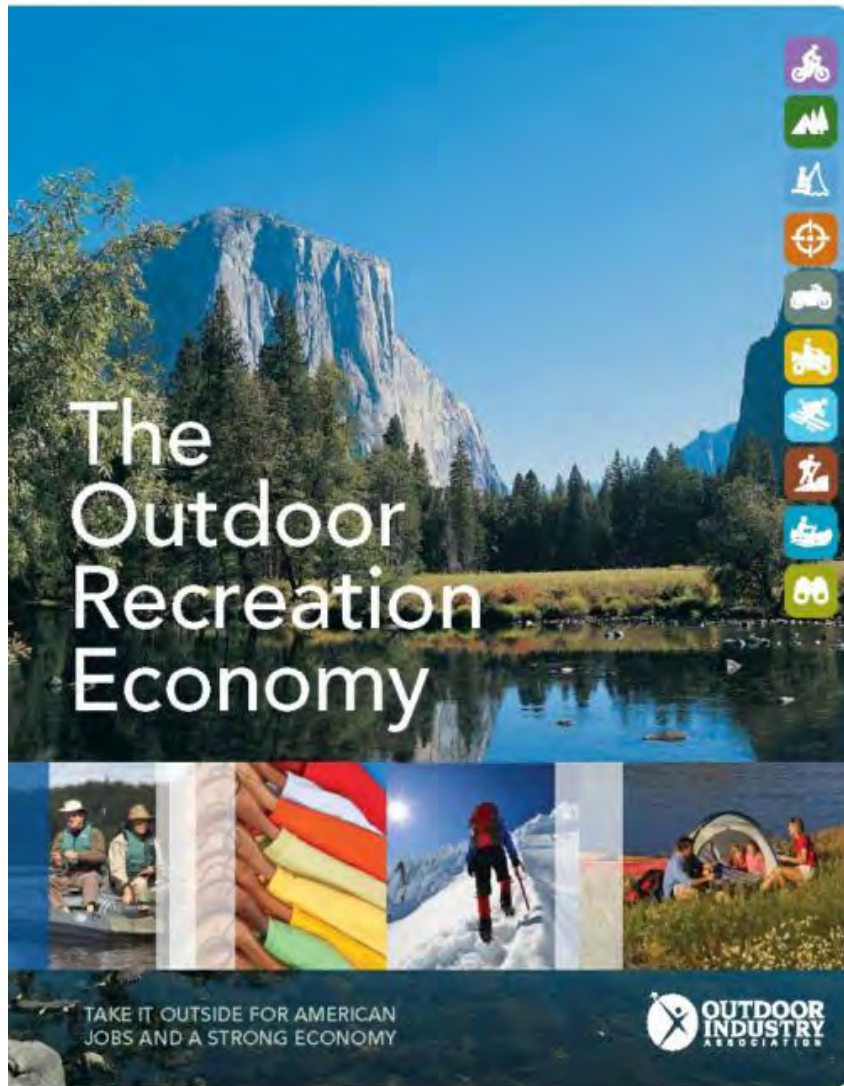
- City of Easley Bike/Ped Master Plan
- Brushy Creek Greenway Feasibility Study
- Brushy Creek Greenway Implementation
- GHS Swamp Rabbit Tram Trail
- City/County of Greenville Greenways Master Plan
- City/County of Spartanburg Greenways Master Plan



doodle rail trail | mission

1. Offer a **safe route for pedestrian and bicycle** travel as a transportation alternative
2. Provide **outdoor recreation** to residents and visitors
3. **Attract tourism** and stimulate the regional economy
4. Attract and **retain employers** and **new businesses** as well as their employees

doodle rail trail | economic impact



Americans spend **more on bicycle gear and trips** (\$81 billion) than they do on airplane tickets and fees (\$51 billion).

doodle rail trail | economic impact

Trails consistently rank in the **top five amenities** in making real estate purchase decisions.



A long, narrow, paved path stretches into the distance, flanked by dense green trees and foliage, creating a tunnel effect. The path is wet and reflective, with a dark, cracked surface. The trees are lush and green, with their branches and leaves forming a canopy over the path. The perspective is from the end of the path, looking down its length towards a bright, open area in the distance.

A large group of people, including runners and some in wheelchairs, are participating in a race along a paved road. The road is bordered by a grassy field on the right, where a sign for "BROWN'S FEED & FARM" is visible. In the background, there are trees, a building, and a gas station with a sign that says "RS". The scene is captured from an elevated perspective, showing the scale of the event.



doodle rail trail | economic impact

- Furman University – Impact Study (Dr. Julian Reed)
- 403,000 annual users in year 2 study/80% cyclist
- 60% male/40% female
- 14% children (under 17)
- 10% used trail for transportation
- Nearby businesses reported revenue or sales increases of 30 to 85 percent
- Up to 30% of new bike users purchasing bikes for the trail
- Annual Revenue from trail users ranged from \$50,000 to \$400,000 (avg. = \$111,250)

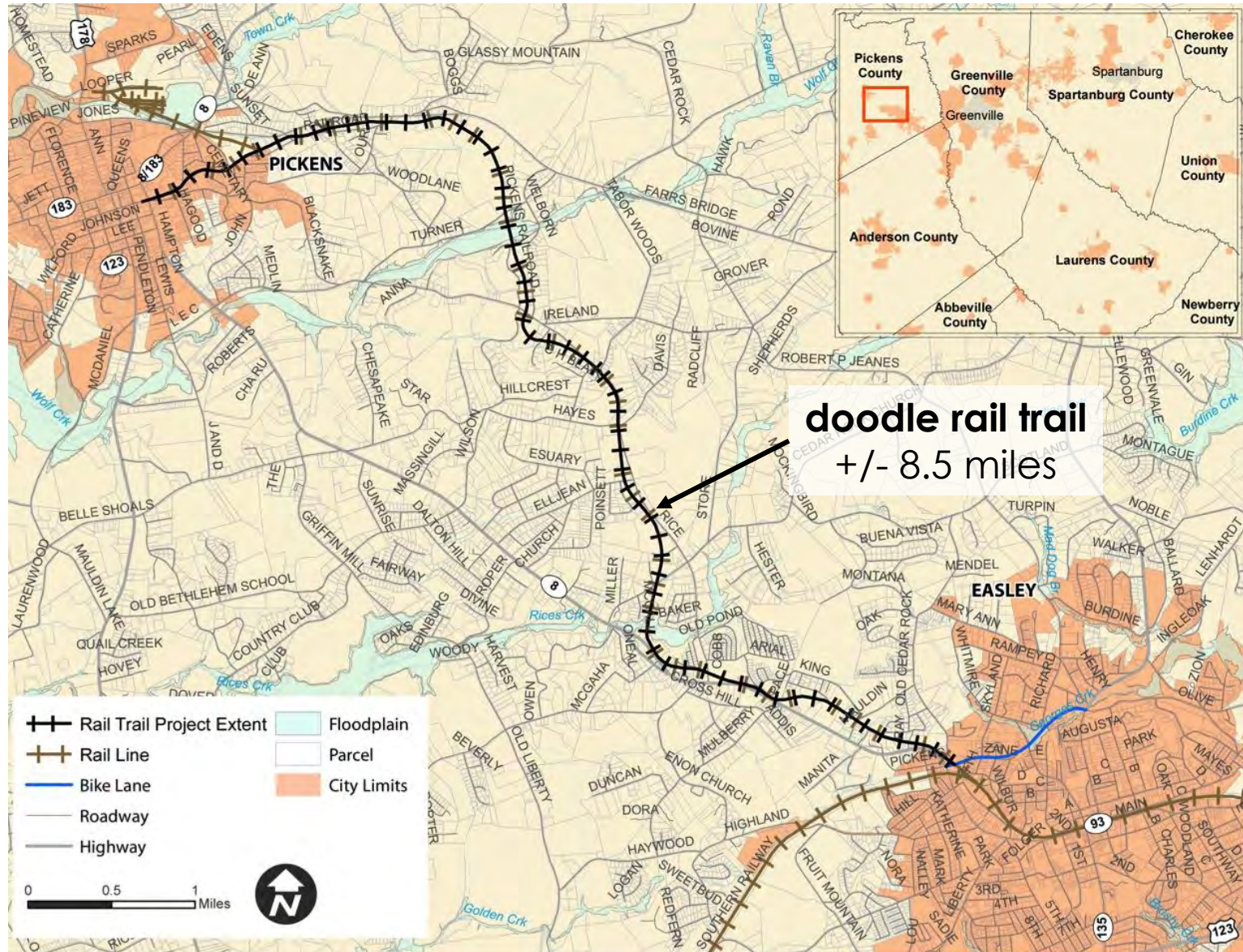


doodle rail trail | plan elements

Background Information
Existing Conditions
Opportunities & Constraints
Public Involvement
Design Recommendations
Design Guidelines
Cost Estimates & Phasing
Trail O+M
Trail Benefits



doodle rail trail | overall map

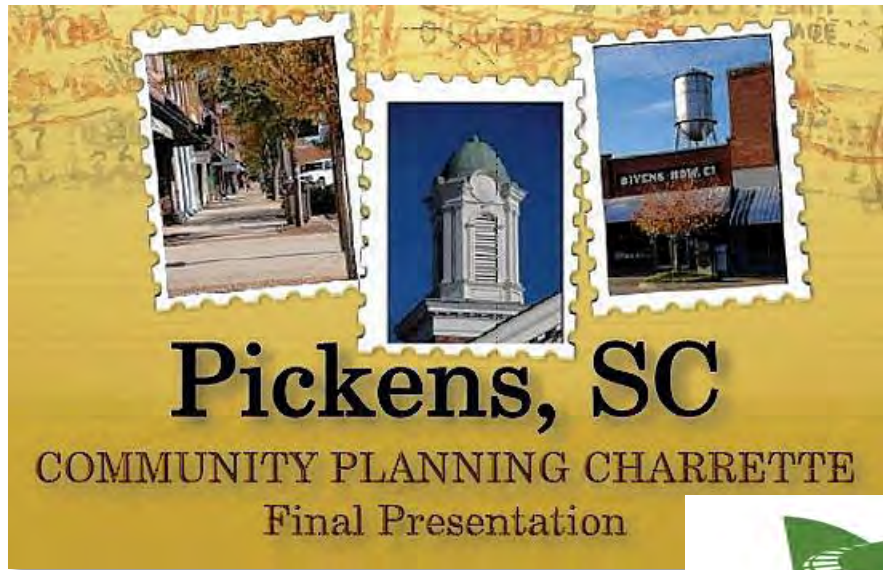


doodle rail trail | background

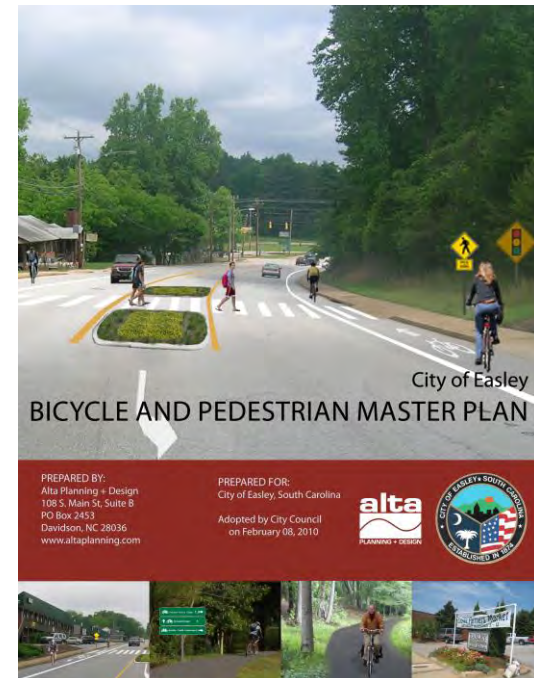
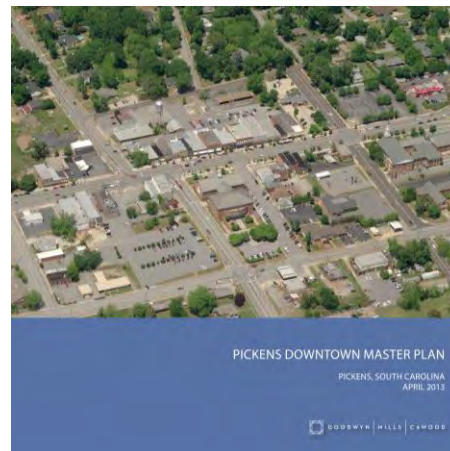


- Chartered Christmas Eve 1890
- Connected Charlotte/Atlanta in 1898
- Identified as key route in 2009 City of Easley Bicycle/Pedestrian Master Plan
- April 2, 2013 last run pulled by Pickens Railway/CLCX
- August 2013 – Purchased by City of Easley and City of Pickens
- October 2013 – Master Plan commissioned by grant from GPATS

doodle rail trail | background



Pickens, South Carolina
COMMUNITY MASTER PLAN
CHARRETTE REPORT



doodle rail trail | existing conditions



doodle rail trail | existing conditions



doodle rail trail | existing conditions



doodle rail trail | existing conditions



doodle rail trail | existing conditions



doodle rail trail | opportunities



Sheet 10 of 11

0 125 250 Feet

doodle rail trail | public involvement

How did you hear about the Doodle Rail Trail Feasibility Study?

A Paying for my speeding ticket

Do you support the Doodle Rail Trail?

yes!

How often would you use the Doodle Rail Trail once it's open for public use?

3 or 4 times or more a month

What type of improvements or amenities would you like to see along the trail?

A dog park.

Do you have any concerns about the Doodle Rail Trail?

I think it would be a great way to attract others to our town



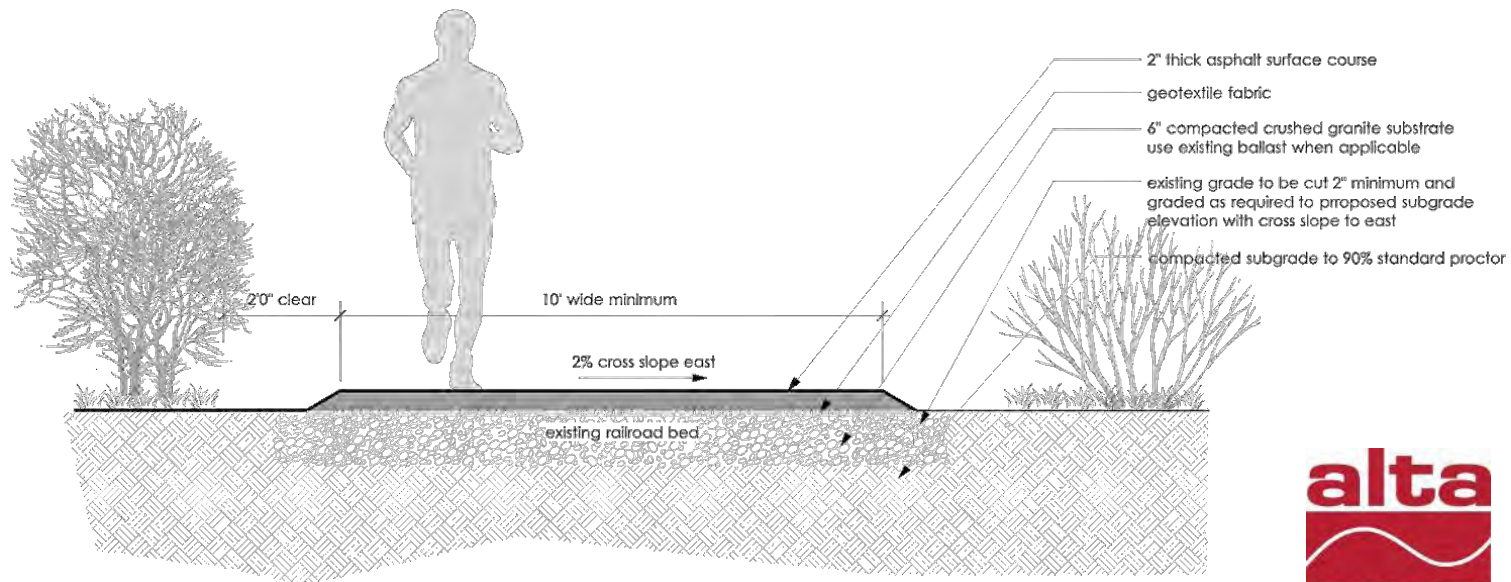
Project Getting Delayed
Safety
Ability of Community to Come Together
Security/Policing
Private Property Privacy
Noise Insurance Liability Property Owner Compensation Potential Tax Increases
Trail/Right of Way Maintenance Responsibility
No Concerns
Project/Maintenance Funding and Costs
Available Parking

doodle rail trail | recommendations



doodle rail trail | recommendations

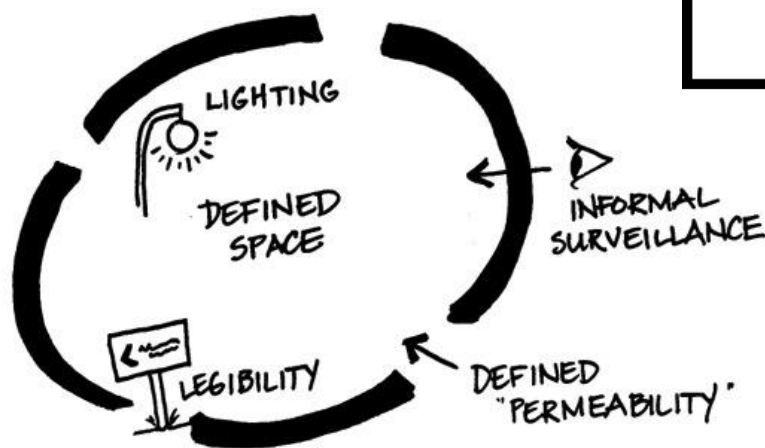
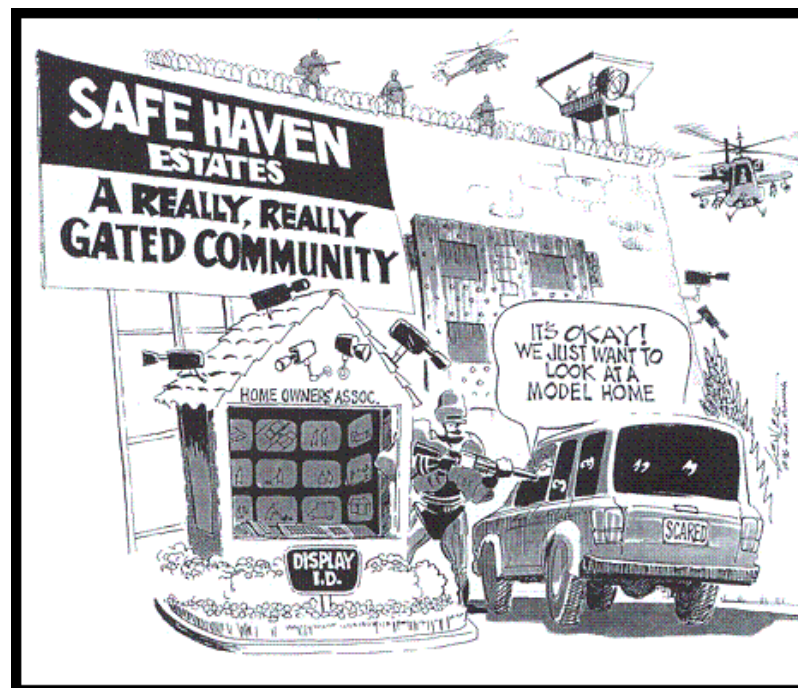
trail surface



doodle rail trail | recommendations

safety

- Crime Prevention Through Environmental Design (CPTED)
- Work closely with adjacent landowners



doodle rail trail | recommendations

safety



doodle rail trail | recommendations

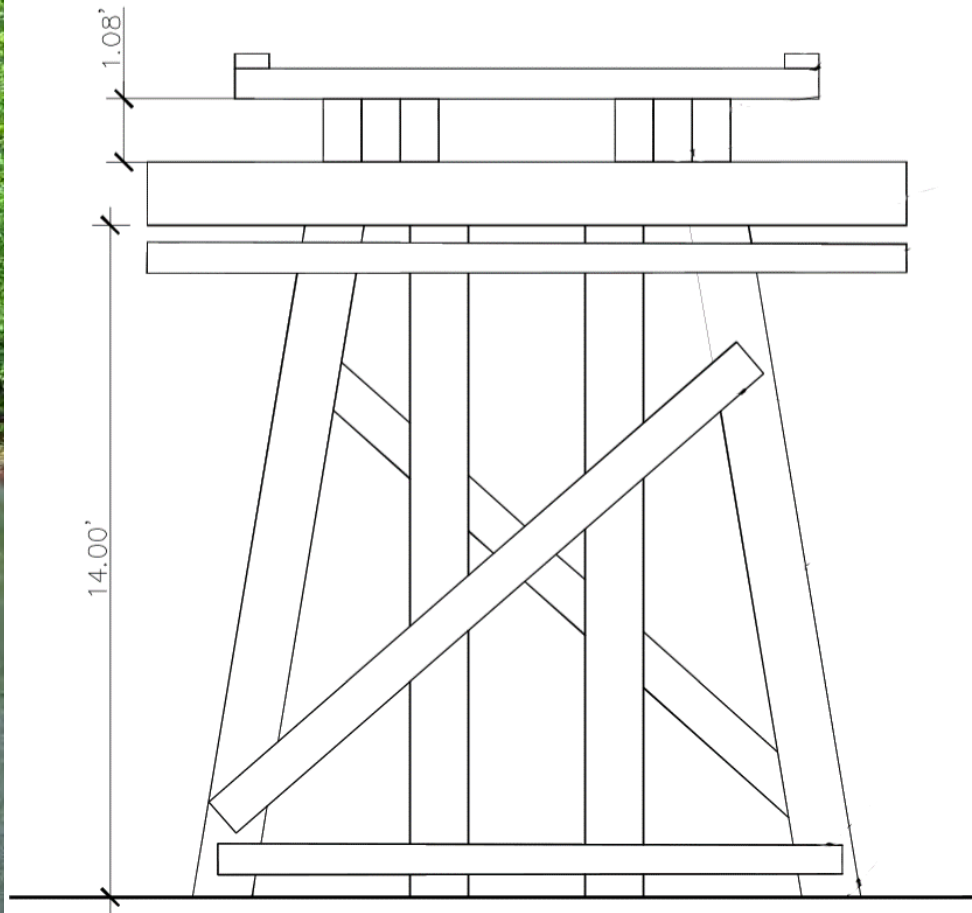
safety

- Managing litter
- Public Art/Murals
- Seating/Amenities
- Wayfinding
- Mile Markers
- Community Engagement
- Fencing
- Managing Graffiti
- Vegetative Buffers
- Lighting



doodle rail trail | recommendations

safety



doodle rail trail | recommendations

safety

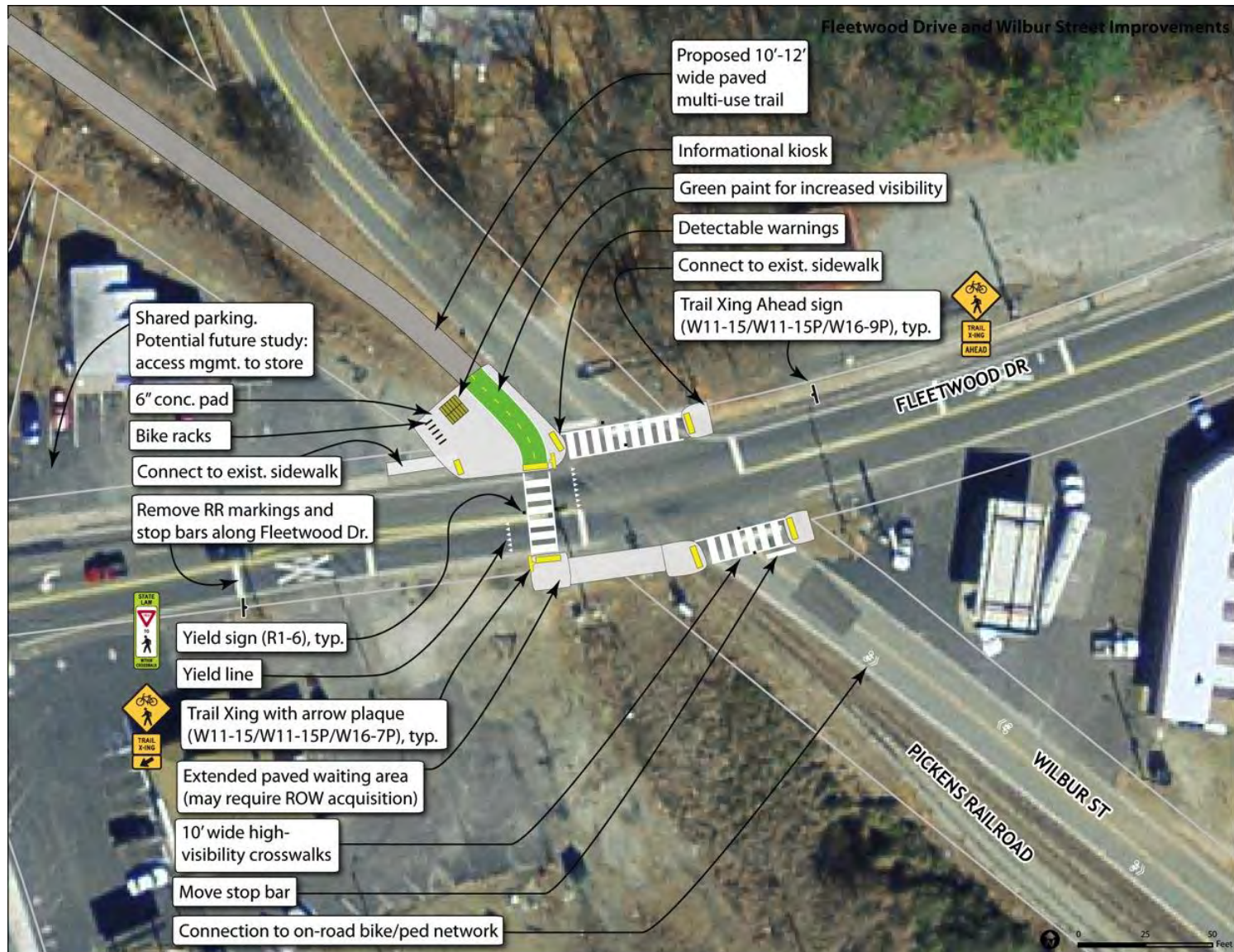


doodle rail trail | recommendations

safety



doodle rail trail | recommendations safety



doodle rail trail | recommendations amenities



doodle rail trail | recommendations amenities



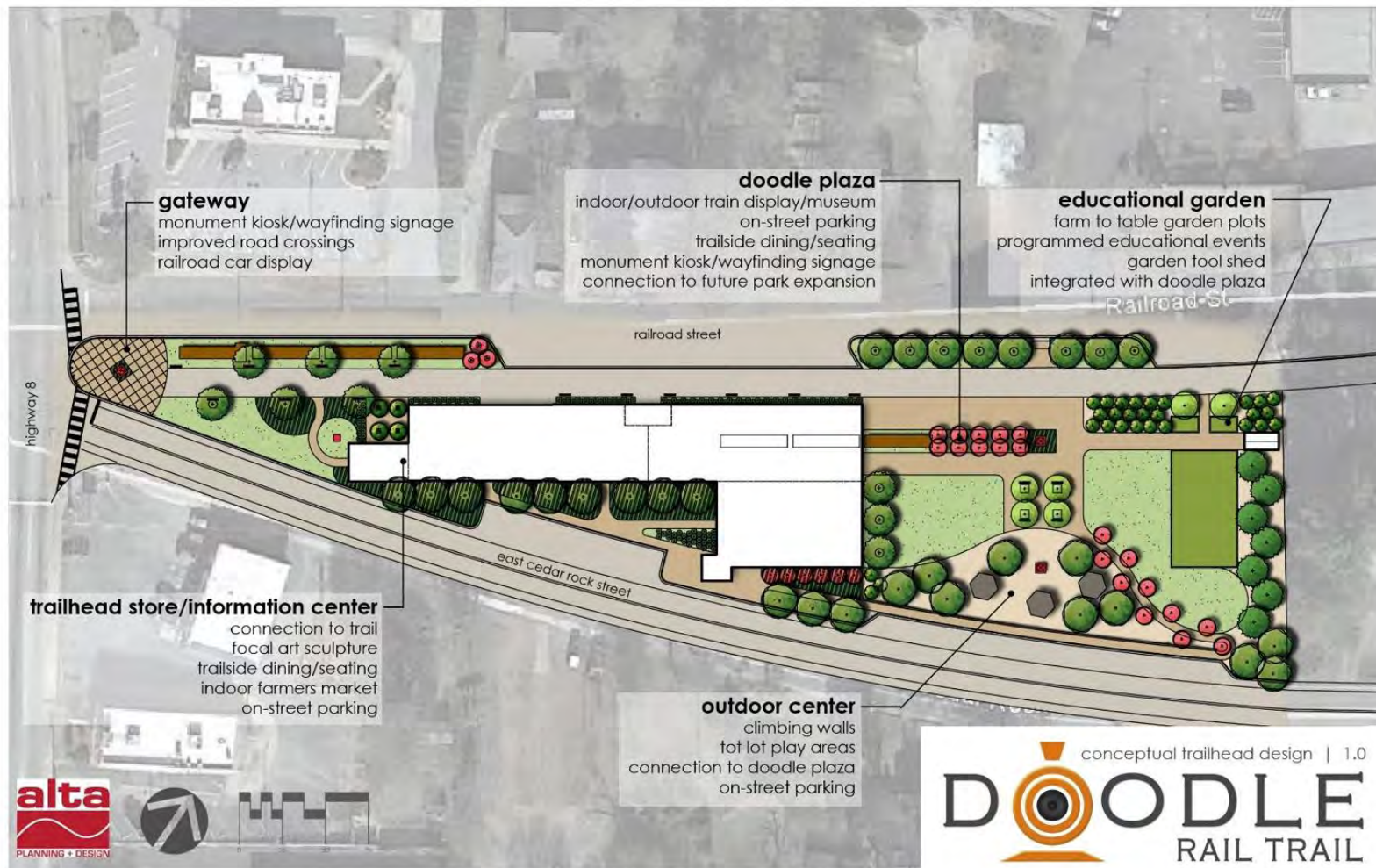
doodle rail trail | recommendations

trailheads



doodle rail trail | recommendations

trailheads



alta
PLANNING + DESIGN



conceptual trailhead design | 1.0

DODDLE

RAIL TRAIL

alta
PLANNING + DESIGN

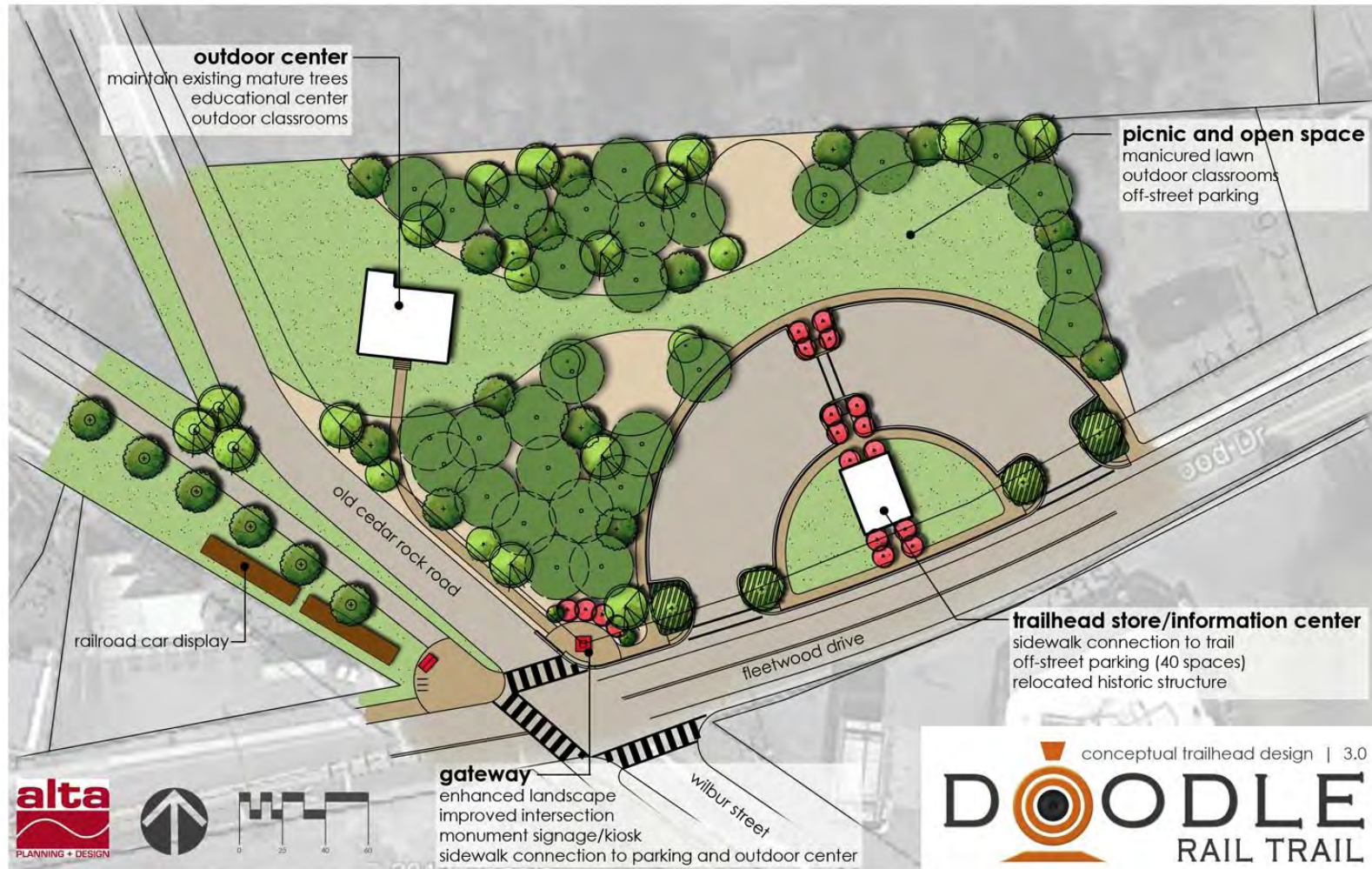
doodle rail trail | recommendations

trailheads



doodle rail trail | recommendations

trailheads



alta
PLANNING + DESIGN



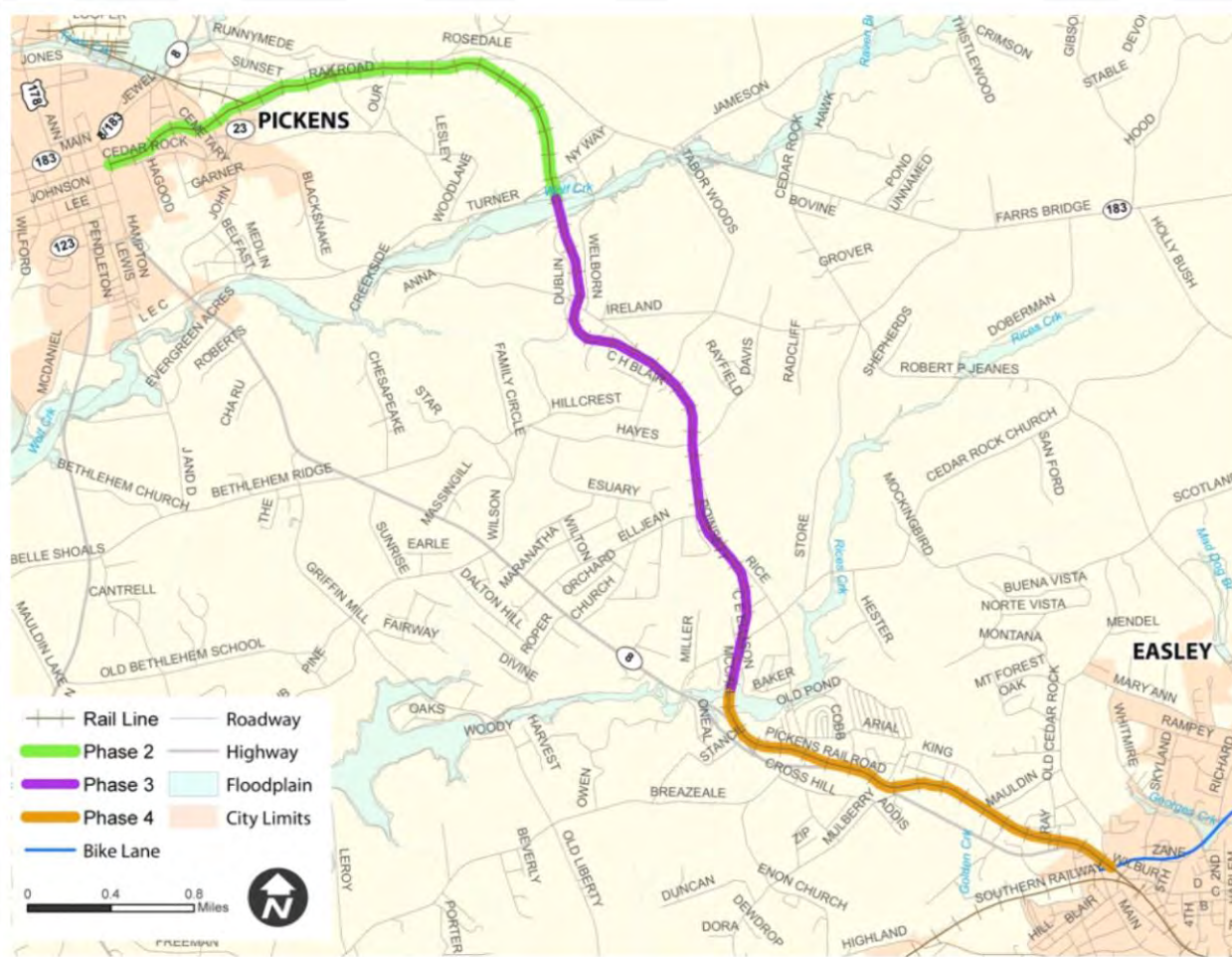
conceptual trailhead design | 3.0

DODDLE

RAIL TRAIL

alta
PLANNING + DESIGN

doodle rail trail | phasing



PHASE 1: Structural Improvements

PHASE 2: Downtown Pickens to Wolf Creek

PHASE 3: Wolf Creek to Rices Creek

PHASE 4: Rices Creek to Downtown Easley

PHASE 5: Downtown Pickens Trailhead

PHASE 6: Downtown Easley Trailhead

doodle rail trail | cost estimates

	DESCRIPTION	LENGTH	COST
Phase 1	Structural Improvements	n/a	\$343,724.87
Phase 2	Downtown Pickens to Wolf Creek	2.7 miles	\$872,560.20
Phase 3	Wolf Creek to Rices Creek	2.7 miles	\$804,090.35
Phase 4	Rices Creek to Downtown Easley	2.1 miles	\$1,029,933.93

\$3,050,309.20



doodle rail trail | cost estimates

	DESCRIPTION	LENGTH	COST
Phase 1	Structural Improvements	n/a	\$343,724.87
Phase 2	Downtown Pickens to Wolf Creek	2.7 miles	\$872,560.20
Phase 3	Wolf Creek to Rices Creek	2.7 miles	\$804,090.35
Phase 4	Rices Creek to Downtown Easley	2.1 miles	\$1,029,933.93
Phase 5	Downtown Pickens Trailhead	n/a	\$1,010,730.60
Phase 6	Downtown Easley Trailhead	n/a	\$400,570.50
TOTAL ALL PHASES			\$4,461,610.45



doodle rail trail | operations

The Doodle Rail Trail will be operated and maintained as a joint effort between the City of Easley and City of Pickens



MAINTAIN.

TRAILS DON'T BUILD THEMSELVES. GET INVOLVED.
NO EXPERIENCE NECESSARY.

doodle rail trail | operations

Establishment of an Advisory Committee made up of local government, interested citizens, trail advocates, and project stakeholders to assist with public outreach, funding strategies, maintenance, and advocacy



A long, narrow, paved path stretches into the distance, flanked by dense green trees and foliage, creating a tunnel effect. The path is wet and reflective, with a bright light source visible at the far end, creating a strong perspective. The trees are lush and green, with sunlight filtering through the leaves. The path is made of dark asphalt or concrete, and the overall scene is peaceful and serene.

A large group of people, including runners and some in wheelchairs, are participating in a race along a paved road. The road is bordered by a grassy field on the right, where a sign for "BROWN'S FEED & FARM" is visible. In the background, there are trees, a building with a red roof, and a gas station with a blue and white sign. The sky is overcast.





Blake Sanders, PLA

Senior Landscape Architect

Alta Planning + Design

1 Augusta Street, Suite 301C

Greenville SC 29601

phone. 864.617.0347

email. blakesanders@altaplanning.com



Katherine Hendricks

City Administrator

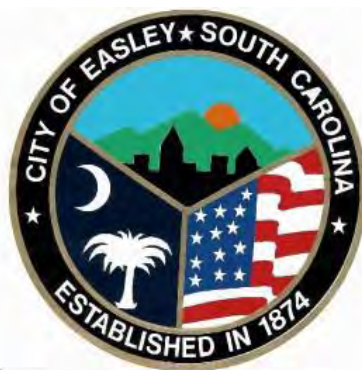
City of Pickens

219 Pendleton Street

Pickens SC 29671

phone. 864.878.6421

email. katherinehendricks@pickenscity.com



Jonathan 'Fox' Simons

City Administrator

City of Easley

205 North 1st Street

Easley SC 29641

phone. 864.855.7900

email. fsimons@cityofeasley.com

